



# HAPPY HOLIDAYS FROM PHI DELTA THETA



THE PHI DELT TRIBUNE  
SPRING SEMESTER PREVIEW  
DECEMBER 2019 | ISSUE 2





# LOOKING FORWARD TO SPRING 2020



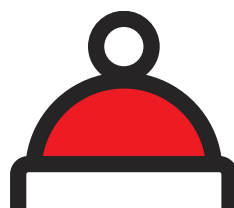
My name is Ezra Schultz, Bond #392. I would like to begin by wishing you all a happy holidays. I hope you're all spending quality time with your loved ones and that this newsletter finds you doing well. Over winter break I will attend this year's President's Leadership Conference in St. Louis, it will be a phenomenal opportunity to refine the vision NY Eta has adhered to as well as help further define the goals we have created to achieve that vision.

We are excited to begin recruitment of Beta Class in January, and our goal is to increase the operating chapter size to the mid 40s. During the academic year my personal focus as president will be to better report to RIT and GHQ in order to increase performance in our accreditation standards, foster better relations with RIT administration and other Greek organizations, as well as increase connections between alumni and active brothers. We will have several events throughout the year that will include alumni such as a National Founders Day celebration on March 15th.



## **FAREWELL TO OUR WINTER GRADUATE**

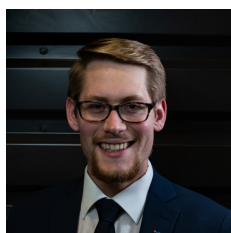
New York Eta is sad to see our only winter graduate, Kevin Mejia #409, move on to bigger and better things. We know that Kevin will make us proud in the real world. He will be missed.





# MEET THE NEW E-BOARD

In late October and early November, a new E-Board was elected. These 11 men will serve for the entirety of the 2020 calendar year.



**President**  
Ezra Schultz



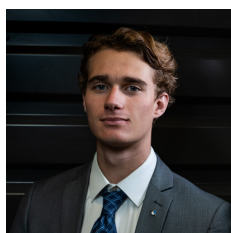
**Vice President**  
Kevin Metzler



**Phikeia Educator**  
Henry Ballentine



**Recruitment**  
Jared Ebenstein



**Risk Manager**  
Ben Clements



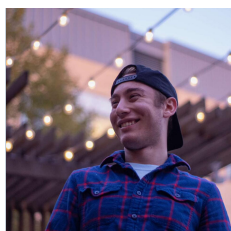
**Treasurer**  
Seth Champoux



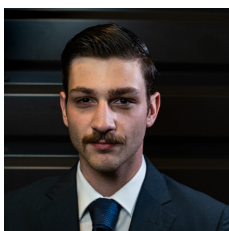
**Scholarship**  
Andrew Gosselin



**Warden**  
Mark Nicolella



**Service**  
Darion Bubel



**Social**  
Austin Barrett



**Secretary**  
Max Italiaander

